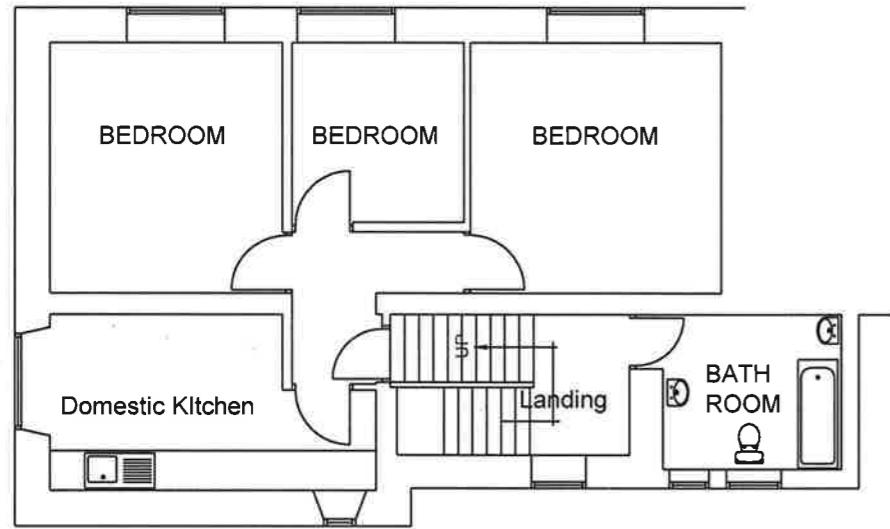
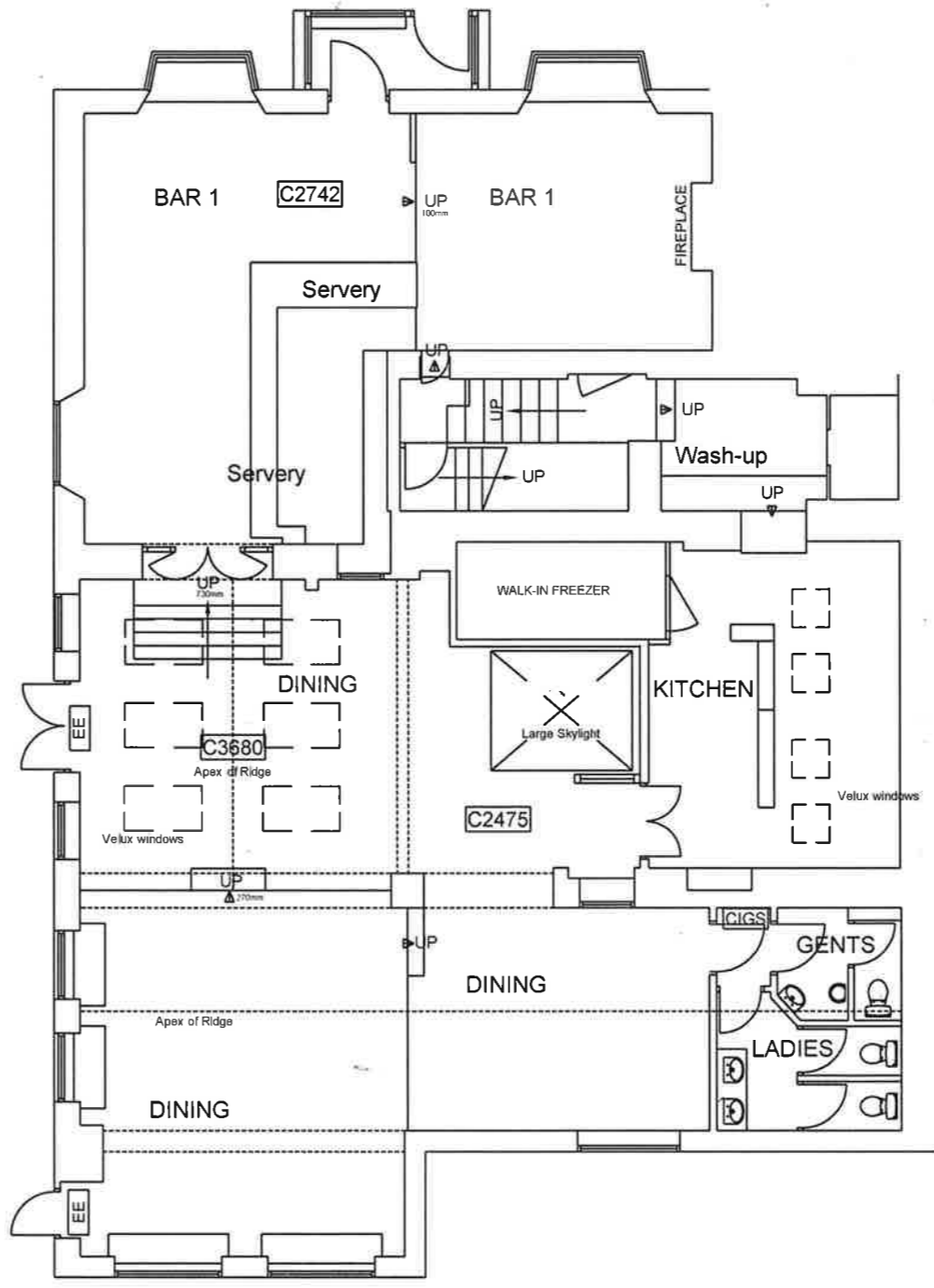


NOTE:
Do not scale off this drawing. All dimensions to be checked on site by the Contractor. Any discrepancy to be reported to the Architect.



FIRST FLOOR - full survey



GROUND FLOOR - full survey

- Floor Areas	
Area	m2
Total Ground Floor Area	232
Total First Floor Area	
Total Second Floor Area	
Total Cellar Floor Area	
Bar 1	58.6
Bar 2	
Dining	79.2
Kitchen	44.3
Store	
Gents Toilet	5.4
Ladies Toilet	5.3
Disabled Toilet	
Function Room	
Guest bedroom	
En-suite	

- KEY**
- [N1] General Fire Notice
 - [N2] Staff Fire Notice
 - [N3] 'Fire Door Keep Locked' sign
 - [N4] 'Fire Exit Keep Clear' sign
 - [N5] 'Fire Door Keep Closed' sign
 - [FB] Fire Blanket
 - [DP] Dry Powder Fire Extinguisher
 - [CC] Carbon Dioxide Fire Extinguisher
 - [FO] Foam Fire Extinguisher
 - [WA] Water Fire Extinguisher
 - [E1] Emergency Light Fitting
 - [EE] Emergency Exit Sign
 - [H] Heat Detector
 - [S] Smoke Detector
 - [BGP] Break Glass Call Point
 - [FAS] Fire Alarm Sounder
 - [FAP] Fire Alarm Panel
 - [AWP] Amusement with Prizes
 - [SWP] Skill with Prizes
 - [ATM] Cash machines
 - [CIGS] Cigarette Machine
 - [C3680] Ceiling Height



PROPERTY SERVICES DEPARTMENT
THE BREWERY, HAVELOCK STREET,
BEDFORD MK40 4LU.
Tel. 01234 272766 Fax. 01234 761066

HOUSE
The Hand and Shears
Church Harborough
Witney

DRAWING
Ground & 1st Floor Building Plan
Licensing Layout

SCALE 1:100
DATE March 2007
DRAWN BY GTB

DRAWING No.
H20