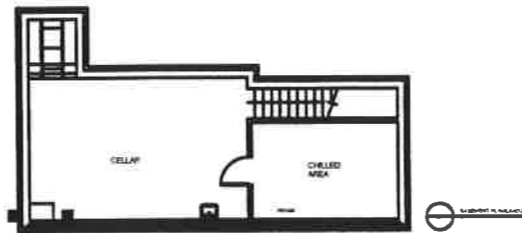
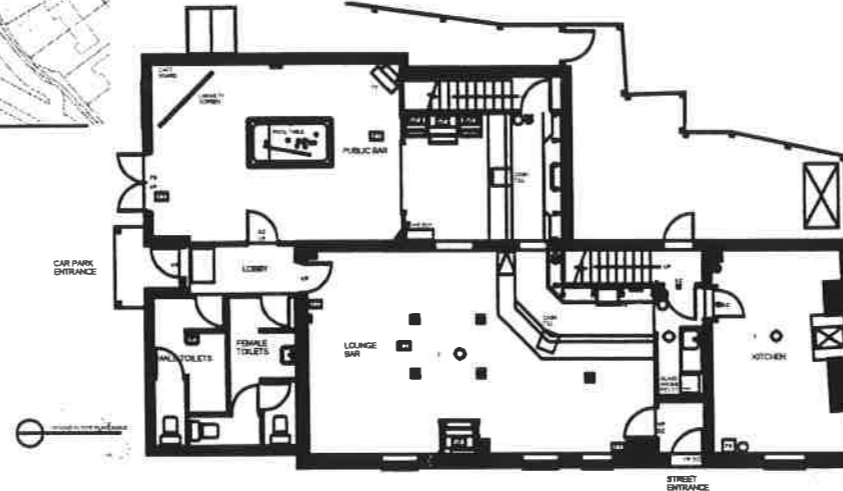
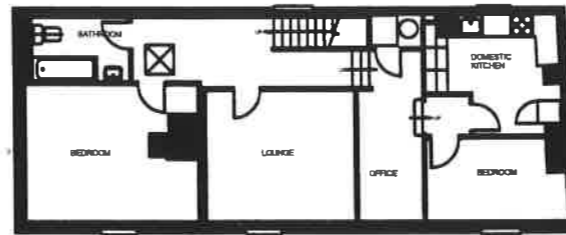


**THE COMPOSITE TEST**

- A All upholstery must comply with BS 5852 Part 1 1979 to ignition source 0 and 1, and BS 5852 Part 2 to ignition source 5, with pre-soak water treatment to BS 5851 Para 4.
- B For compliance to this standard it will be necessary to have the composite seat, not component parts, tested by an independent testing station and certification of compliance obtained. Official certification of compliance will be required by this office prior to the completion of the project.
- C If the upholstery material is not inherently flame retardant and chemical flame retardant treatment is to be applied, a water soak of the treatment material will be required before submission of the material combination for test to BS 5852. Alternatively a proprietary test, tested for retardant must be used.
- D The following test sample sizes may be required, please note the sizes given below are required for each combination to be tested. If you are testing upholstery that uses different fittings in the seat back and arms but the same covering material then you should send in enough fabric and filling to test all the combinations.
  - BS 5852 Part 1 1979 (algebraic and match)
    - Fabric: 800mm x 800mm
    - Filling: 450mm x 450mm x 75mm
  - BS 5852 Part 2 1982 (Briane items 2 & 3 Woodstock)
    - Fabric: 1,100mm x 850mm x 2
    - Filling (a) 450mm x 450mm x 75mm x 2
    - (b) 450mm x 450mm x 75mm x 2

**PRE-PROTECTION NOTES**

- CURTAINS & DRAPES** Are to satisfy type B performance requirements of BS 5847 part 2.
- DECORATIVE FLORA** Are to be flame retardant quality and satisfy Fire Authorities.
- SURFACE FINISHES** General circulation areas to comply with Class 1 surface spread of flame. Staircase and escape routes to comply with Class 0 surface spread of flame.
- UPHOLSTERED FINISHES** Must conform to BS 5852 Part 1 ignition source 0 on 1, and BS 5852 Part 2 ignition source 5 with pre-soak water treatment to BS 5851 Part 4. To comply with these standards the composite seat must be tested by an independent approved testing station and certificate issued.
- UPHOLSTERED FINISHES** Must conform to BS 5852 Part 1 ignition source 0 on 1, and BS 5852 Part 2 ignition source 5 with pre-soak water treatment to BS 5851 Part 4. To comply with these standards the composite seat must be tested by an independent approved testing station and certificate issued.
- FIRE ALARM SYSTEM** To comply with BS 5839 or Fire Officer's requirements.
- EMERGENCY LIGHTING** Installation is to comply with BS 5268 Part 1.
- ILLUMINATED EXIT SIGNS** Are to comply with BS 2580.
- FIRE FIGHTING EQUIPMENT** Is to be to the satisfaction of the relevant Fire Authority.
- FIRE SAFETY RELATED SIGNS AND NOTICES** Are to conform with BS 5499 Part 1.
- VENTILATION**
  - Public Rooms - 10-12 air changes per hour.
  - Toilets - 14 air changes per hour.
  - Kitchen - 20 air changes per hour with a grease extracting duct ventilation system.



**NOTES**

**FIRE LEGEND**

- PB PANIC BAR
- VP VISION PANEL
- HD HEAT DETECTOR
- CD CARBON MONOXIDE DETECTOR
- SD SMOKE DETECTOR
- CP CALL POINT
- AB ALARM BELL
- EL EMERGENCY LIGHT
- EEB ILLUMINATED EMERGENCY EXIT SIGN
- 1/2HR FIRE DOOR, SELF CLOSING
- 1HR FIRE DOOR, SELF CLOSING
- SC SELF CLOSER
- DP DRY POWDER EXTINGUISHER
- WP WATER EXTINGUISHER
- CO2 CO2 EXTINGUISHER
- FOAM FOAM FIRE EXTINGUISHER
- AW AMUSEMENTS WITH PRIZES
- SW SKILL WITH PRIZES
- AT CASH MACHINE
- PP PAY PHONE
- GN GENERAL FIRE NOTICE
- SN STAFF FIRE NOTICE
- N3 FIRE DOOR KEEP LOCKED SIGN
- N4 FIRE EXIT KEEP CLEAR SIGN
- FB FIRE BLANKET

**STATISTICS**

	EXISTING	PROPOSED
BAR AREA	189 sq	189 sq
CUSTOMER AREA	884 sq	884 sq
TOILETS	160 sq	150 sq
NO. OF SEATS	52	52

**REVISIONS**

REV	DATE	AMENDMENT

**designconsultants**  
 mobbs miller house  
 6 christchurch road  
 abingdon  
 northampton NN1 5LL  
 t: 01804 838 430  
 e: studio@abdcdesign.co.uk  
 www.abdcdesign.co.uk

CLIENT  
**CHARLES WELLS**

PROJECT  
**THE CAMBRIDGESHIRE HUNTER  
 EYNEBURY, ST. NEOTS**

DESCRIPTION  
**LICENSING PLAN LAYOUT**

SCALE 1 : 50 @ A1	DATE 10/05/05	INITIATOR AS
STATUS AS BUILT		CHECKED
DRAWING NO. 1957 - CD - 09	REVISION -	

This drawing has been prepared for the above project only and is the copyright of the Designers. All dimensions to be checked on site by Principal Contractor and any discrepancies notified prior to commencement of work. Do not scale from this drawing.