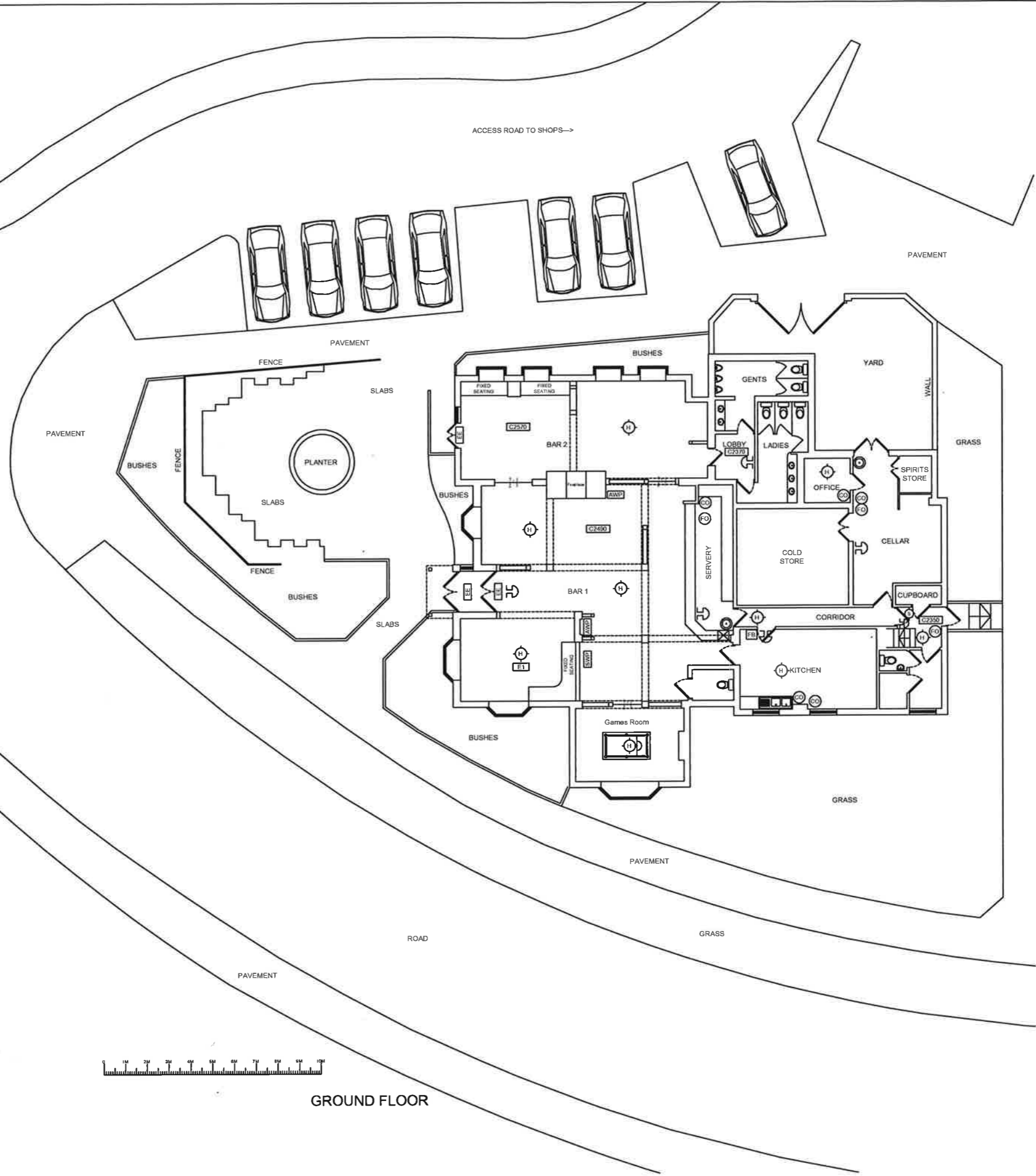
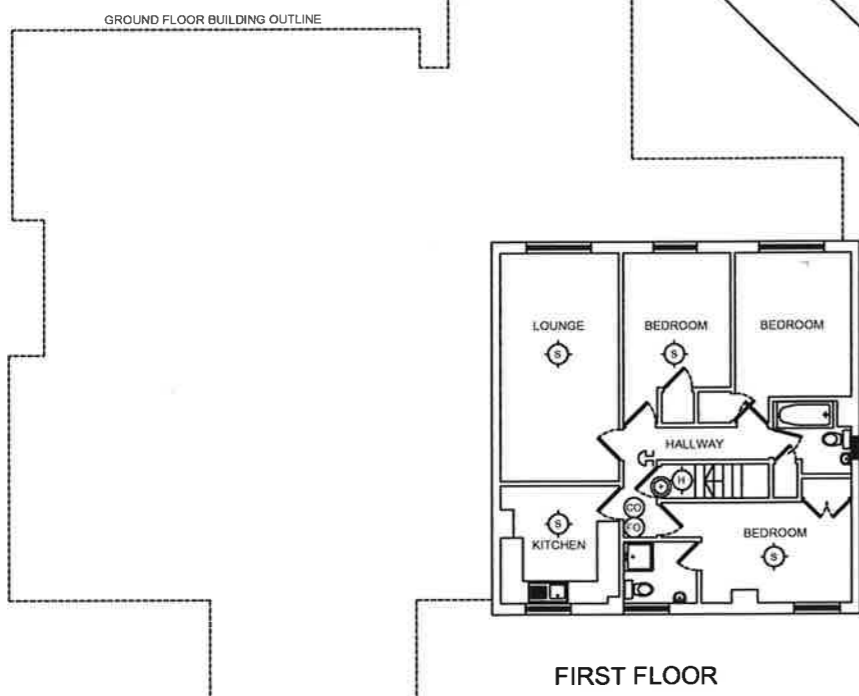


NOTE:
Do not scale off this drawing. All dimensions to be checked on site by the Contractor. Any discrepancy to be reported to the Architect.

- Floor Areas	
Area	m ²
Total Ground Floor Area	323
Total First Floor Area	
Total Second Floor Area	
Total Cellar Floor Area	18.6
Bar 1	114.8
Bar 2	51.1
Games Room	17
Restaurant/Dining Room	
Kitchen	23.3
Cold Store	23.1
Gents Toilet	10
Ladies Toilet	11.2
Disabled Toilet	2.7
Function Room	
Guest bedroom	



- KEY**
- N1 General Fire Notice
 - N2 Staff Fire Notice
 - N3 'Fire Door Keep Locked' sign
 - N4 'Fire Exit Keep Clear' sign
 - N5 'Fire Door Keep Closed' sign
 - FB Fire Bucket
 - CP Dry Powder Fire Extinguisher
 - CD Carbon Dioxide Fire Extinguisher
 - FO Foam Fire Extinguisher
 - WA Water Fire Extinguisher
 - EL Emergency Light Fitting
 - EE Emergency Exit Sign
 - H Heat Detector
 - S Smoke Detector
 - B Break Glass Call Point
 - J Fire Alarm Sounder
 - F Fire Alarm Panel
 - AWP Amusement with Prizes
 - SWP Skill with Prizes
 - ATM Cash machines
 - PP Pay Phone
 - C2800 Ceiling Height




CHARLES WELLS

PROPERTY SERVICES DEPARTMENT
THE BREWERY, HAVELOCK STREET,
BEDFORD MK40 4JU.
Tel. 01234 272766 Fax. 01234 761066

HOUSE
The Bird & Bush,
Hancock Drive,
Luton.

DRAWING

Ground & 1st Floor Building Plan
& External Areas

SCALE 1:100
DATE Sep 2006
DRAWN BY AJO

DRAWING No.
B 43